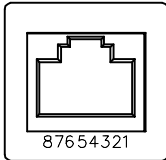
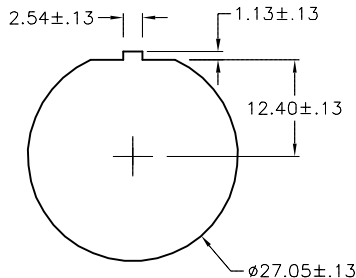
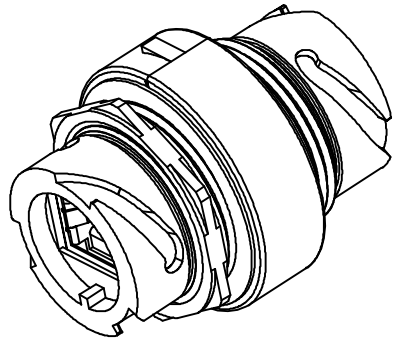
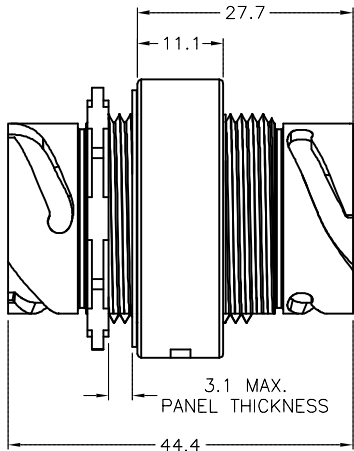
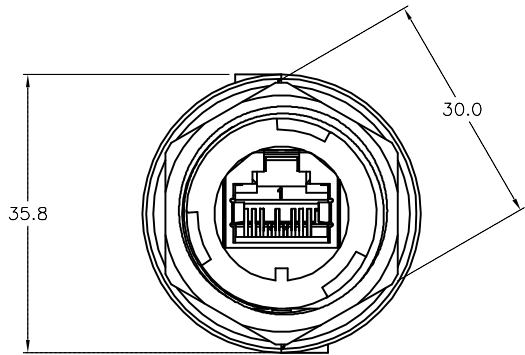
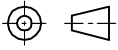


RJ45SF END VIEW	PANEL CUTOUT	SPECIFICATIONS	
<div></div> <div>Ethernet</div>	<div></div>	RATED CURRENT [A]	1.5 A
		RATED VOLTAGE [V]	42 V
		TEMPERATURE RATING	-40°C to +60°C (-40°F to +140°F)
		PORTS	2x RJ45SF PORTS
		LOCKNUT MATERIAL/PLATING	STEEL/ZINC
		PANEL GASKET MATERIAL	NEOPRENE
		RECEPTACLE MATERIAL/COLOR	POLYESTER/BLACK
		TRANSMISSION CHARACTERISTICS	CAT 5e



SOURCE DRAWING - FOR REFERENCE ONLY

RELATED DOCUMENTS					3RD ANGLE PROJECTION		THIS DRAWING IS CONFIDENTIAL AND THE PROPERTY OF TURCK INC. USE OF THIS DOCUMENT WITHOUT WRITTEN PERMISSION IS PROHIBITED.		3000 CAMPUS DRIVE MINNEAPOLIS, MN 55441 1-800-544-7769 (763) 553-7300 (763) 553-0708 fax www.turck.us	
1. 2. 3. 4.							DRFT RDS		DATE 09/26/07	
MATERIAL					ALL DIMENSIONS DISPLAYED ON THIS DRAWING ARE FOR REFERENCE ONLY		APVD AF		SCALE 1=1.0	
SEE SPECIFICATIONS					CONTACT TURCK FOR MORE INFORMATION		UNIT OF MEASUREMENT		DESCRIPTION	
FINISH					MILLIMETERS		DO NOT SCALE THIS DRAWING		RJ45SF RJ45SF 84 IP67	
SEE SPECIFICATIONS									IDENTIFICATION NO.	
									U3-10644	
									REV	
									D	
D ADD TRANSMISSION CHARACTERISTICS					RDS		07/29/20		76048	
REV DESCRIPTION					BY		DATE		ECO NO.	
									FILE: U3-10644	
									SHEET 1 OF 1	